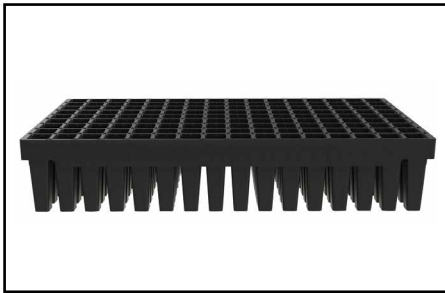
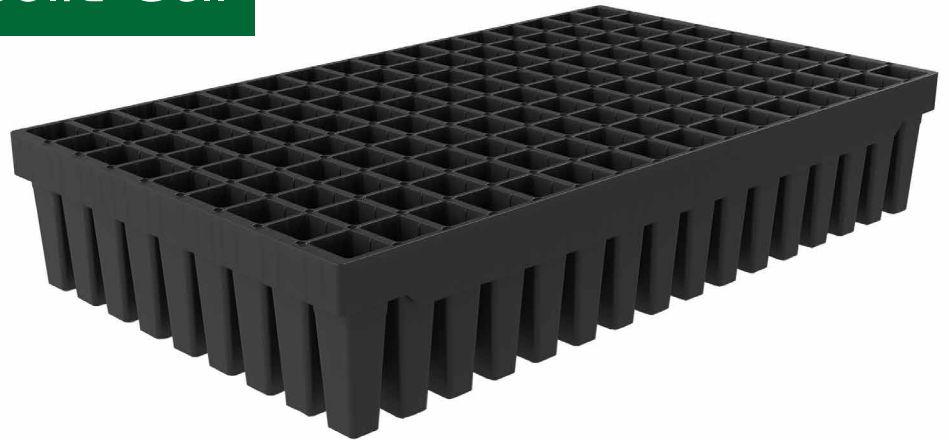


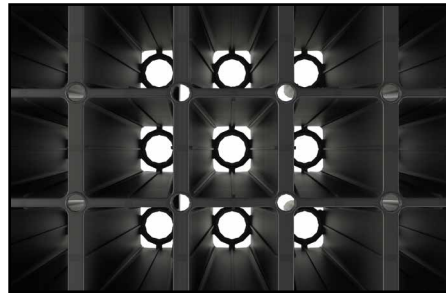
## BCC 411B Solid Cell

### Dimensions:

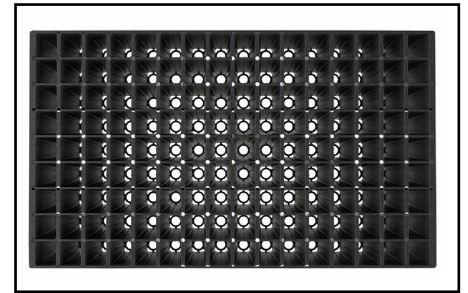
LxWxH mm	350x600x110
No. cells	144
Cells/sq.metre	686
Volume/cell	80cc
Stacking height (mm)	40mm



*outer dimension: 600x350mm*



*several root-guiding ribs*



*good drainage*

**BCC-411B Solid Cell** is specifically developed to suite the conditions required for growing of high quality conifer species, such as pine and spruce on the Canadian market. The design with several root-guiding ribs in each cell create active root tips, offers optimal conditions for root development and ideal root structure.

The BCC-411B Solid Cell is made from hard plastic and the features offered and the quality of the seedlings produced is consistent throughout the life span of the product. The hard plastic material used also offers increased hygiene in the nursery, an increased life span and need for less storage space, since the containers nest. In addition to this the product is 100% recyclable.

*Please contact BCC AB or your local representative for samples and prices.*



**SILVANA IMPORT TRADING INC.**

4269 St. Catherine West, Suite 304, Montreal, Quebec Canada H3Z 1P7

Toll Free: 1 888 939-3523 Phone: 1 514 939-3523 Fax: 1 514 939-3863  
info@silvanatrading.com www.silvanatrading.com