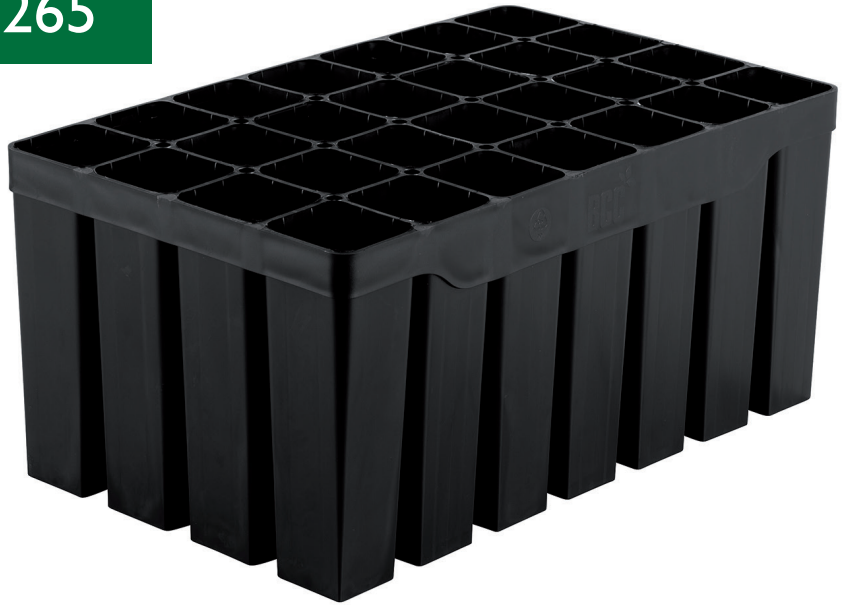


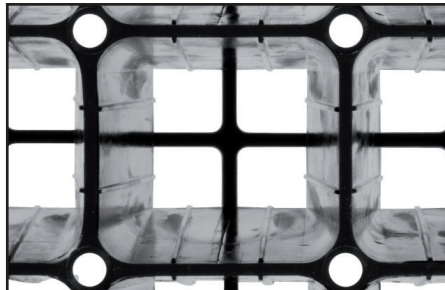
Hiko V-265

Dimensions:

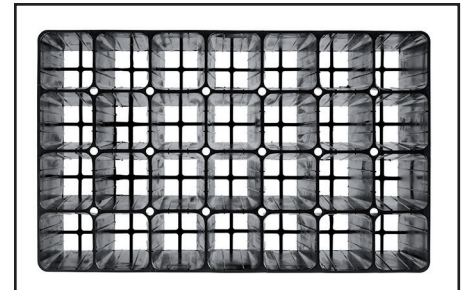
LxWxH mm	352x216x150
No. cells	28
Cells/sq.metre	368
Volume/cell	265 cc
Root guiding rib	



outer dimension: 352x216mm



root guiding rib



good drainage

Hiko V-265 was originally developed together with nursery experts from Central Europe in the mid-1990s. It came to be a widely used growing tray for the general production of broadleaved species, but particularly for Oak and Beech production. The balance between growing density and economics are carefully calculated to give growers optimal profit and supreme growing results. The V-265 can also with advantage serve as the receiving tray in transplanting operations.

Please contact BCC AB or your local representative for samples and prices.