

Complete Black-out system and plant protection





Complete Black-out system

BCC and erco have mutually developed a complete outdoor Black-Out System for treating of seedlings. Our customers have used similar systems for 15 years, a system continuously developing. The system allows today many different options for the customer.

The system is designed for effective Black-Out treatment of seedlings, but is suitable also for frost protection.

The system has an elevated and integrated irrigation boom, in which a hose cart directs and controls the hose. This design is very reliable and cost efficient. All the components in the system are specifically selected to handle the cold and tough climate in Scandinavia. An integrated control box manoeuvres the complete system.

The standard dimensions are about 100 x 125 m, but customization to meet certain demands are possible. The customer can also customize the Black-Out System as for irrigation boom.

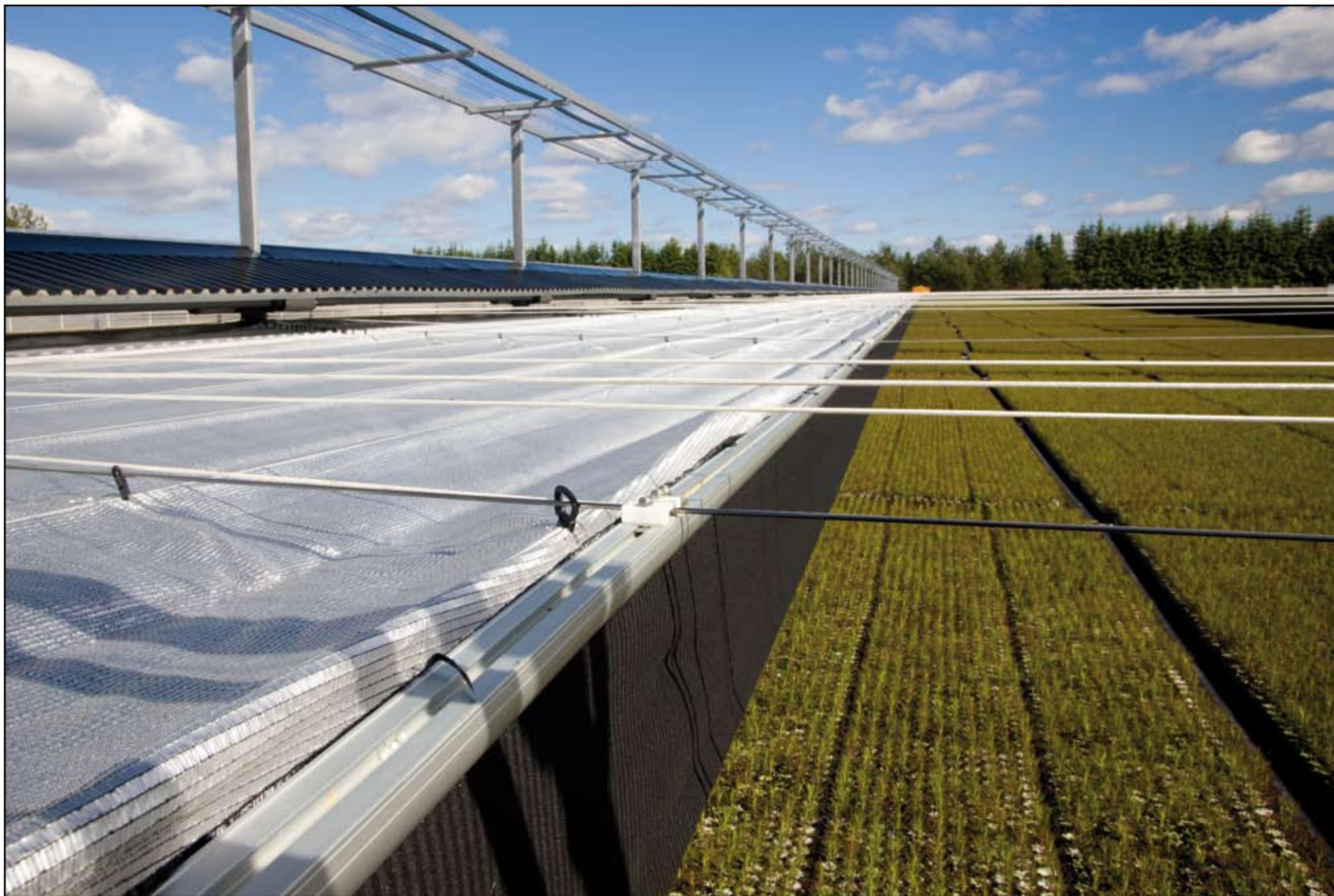






Why Black-out system?

- To accelerate dormancy and increase the hardness on the sprout
- Creates a faster storage of seedlings
- Reduce length growth
- Stops the growth of some Pine species completely. This creates a two year old character grow in only one.
- Effective frost protection
- Increased growing control and safety
- Improved economy



Orsa Besparingskog

Effective system!

- The system is reliable and fully mechanized due to many years of research and development. It can also be run manually.
- The aluminium cloth, with high reflection ability, creates an optimal climate for the seedlings.



- The cloth does not absorb water and therefore keep its shape and it is portable.
- The long distance between the posts makes it fast and easy to fill and empty the area.
- Increased control and safety generate a rapid return of investment.





BCC AB
Profilgatan 15
261 35 Landskrona
Sweden
Telephone: +46 (0) 418 449920

www.bccab.com bcc@bccab.com