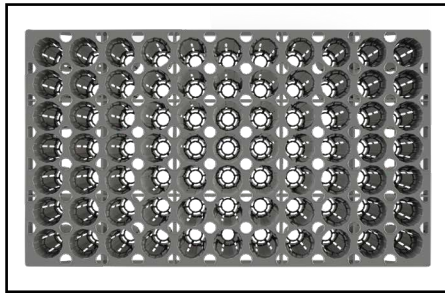


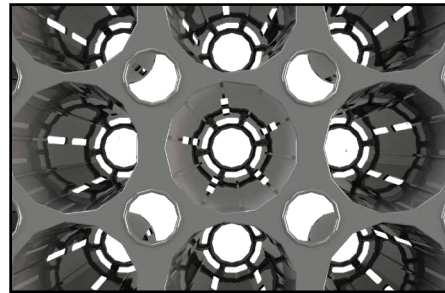
## BCC 412A SideSlit

### Dimensions:

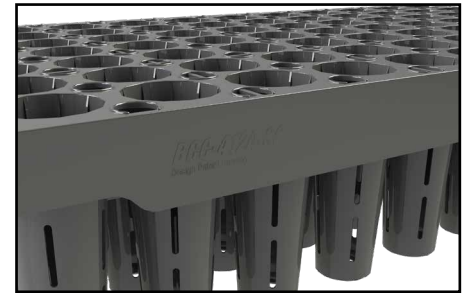
LxWxH mm	350x600x115
No. cells	77
Cells/sq.metre	367
Volume/cell	125cc
Stacking height (mm)	40mm
Side Slits	5 per cell



*outer dimension: 600x350mm*



*5 Side Slits per cell*



*good ventilation*

**BCC-412A SideSlit** is specifically developed to suite the conditions required for growing of high quality conifer species, such as pine and spruce on the Canadian market. The design offers optimal conditions for root development and ideal root structure. The five side slits per cell improves the root structure and help provide active root tips along the side of the root plug. The good ventilation allows for efficient air pruning of the roots and healthy conditions for the green part of the plant.

The BCC-412A SideSlit is made from hard plastic. This assures long life span of the product and no deterioration of the cell walls. The hard plastic material used also offers increased hygiene in the nursery and less storage space is needed, since the containers nest. In addition to this the product is 100% recyclable.

BCC offers complete machine systems to go with the BCC-412A SideSlit or support to help the customers adopt their existing production lines.

*Please contact BCC AB or your local representative for samples and prices.*