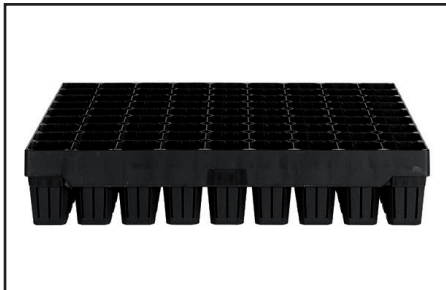
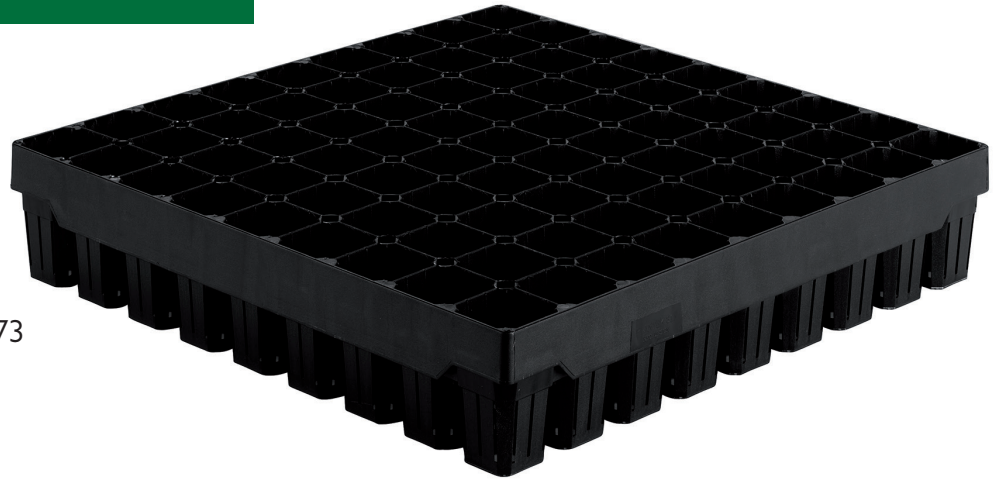


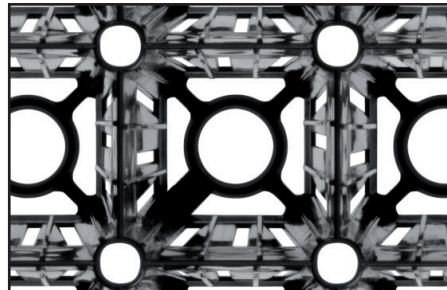
## Plantek 81F

### Dimensions:

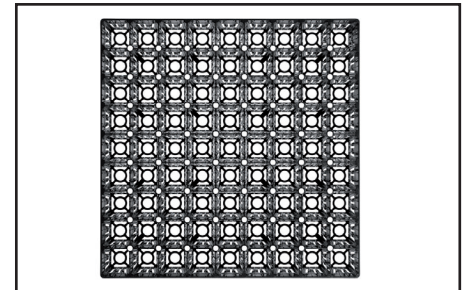
LxWxH mm	385x385x73
No. cells	81
Cells/sq.metre	549
Volume/cell	85 cc
SideSlit design	



*outer dimension: 385x385mm*



*SideSlit design*



*good drainage*

**Plantek 81F** is one of the most used growing trays in Northern Europe and in especially Finland and Russia! It was specifically developed by growing experts in Finland in the 1990s for the production of coniferous species. The design of Plantek seedling trays not only meets basic biological specifications but also technical requirements for ease of handling and automation.

Its advanced side-slit design assures the best possible root development with a minimum of root deformation. This along with its balanced cell volume makes the product optimal for production of coniferous species both from a biological and economical perspective.

*Please contact BCC AB or your local representative for samples and prices.*